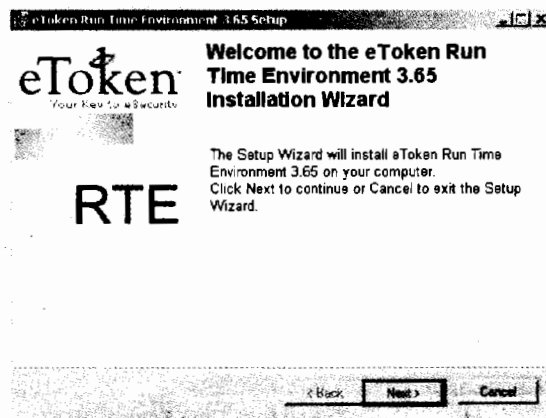
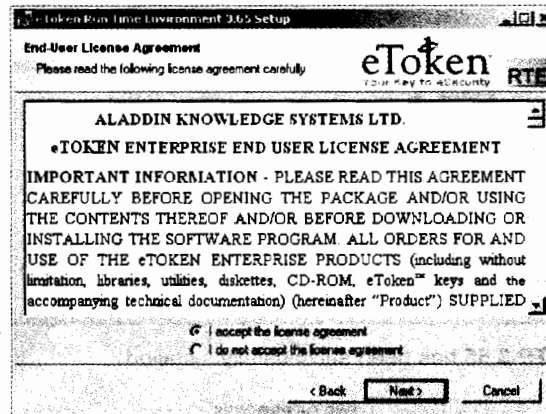


How to install RTE3.65 ?

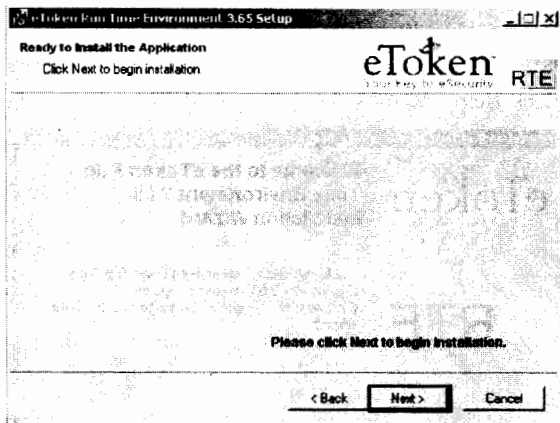
- ① Open eToken folder from the Retail CD and double click on RTE_3.65
- ② Click Next



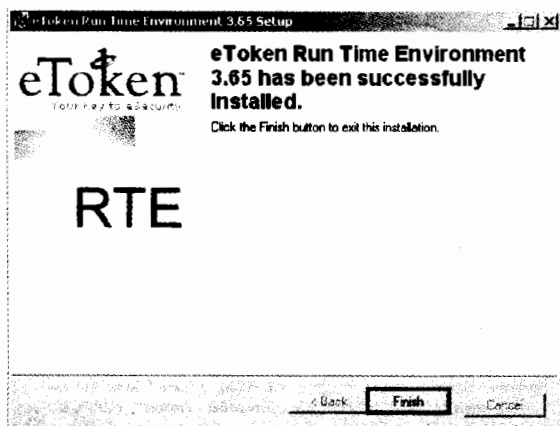
- ③ Select I accept the license agreement and click Next



4 Click Next



5 Click Finish



RTE 3.65 has been successfully installed.

END OF PROCESS

What is the default password of eToken?

All eTokens are configured at manufacture with the factory default password.

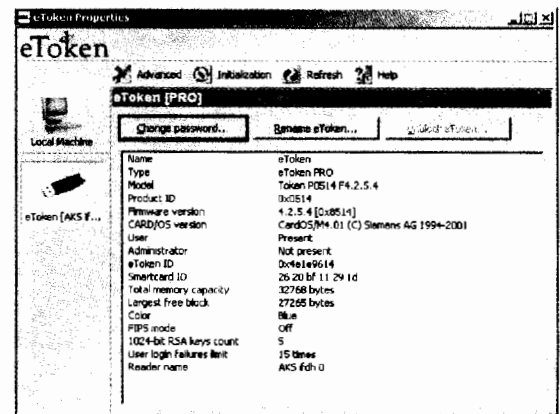
The password is **1234567890**

To ensure strong, two-factor security, and to enable full user functionality, it is important that the user changes the factory default password to an eToken password of the user's own choice, as soon as the new eToken is received.

For this reason, the user is forced to change the default password the first time the eToken is used.

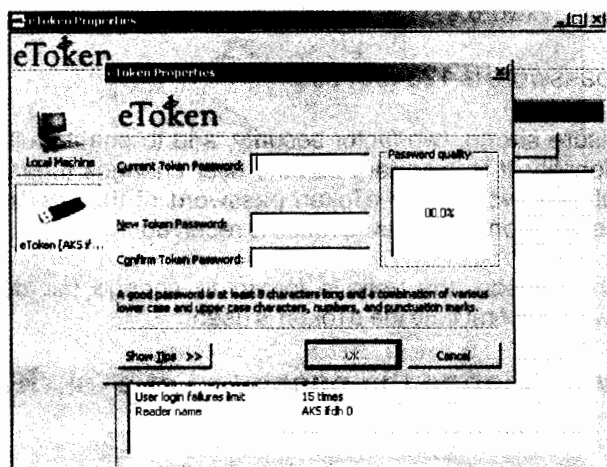
How to change the password of eToken?

- 1 Insert the eToken in the USB port of the computer.
Click **Start > programs > eToken > eToken properties**
Click **Change Password**



■ How to change eToken Password?

- 2 Type **default password**, **new password** and **confirm password** . Click **OK**.



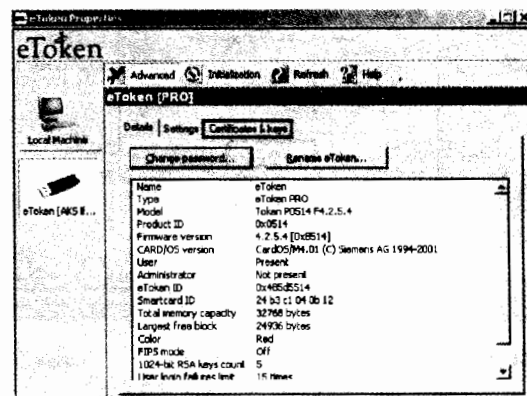
- 3 Password has successfully changed.

..... END OF PROCESS

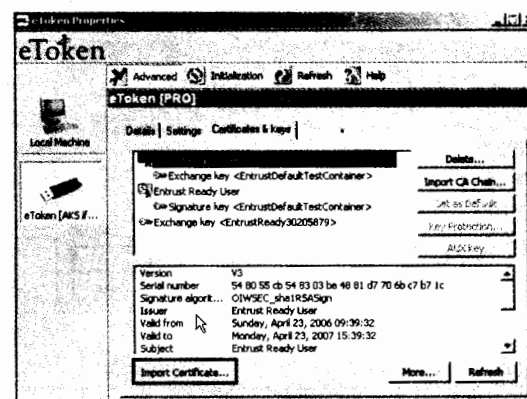
■ How to import Digital Certificate in eToken?

- 1 Insert the **eToken** in the USB port of the computer.
Click **Start > programs> eToken> eToken properties**
Click on **Advanced Type eToken password**. Click **OK**

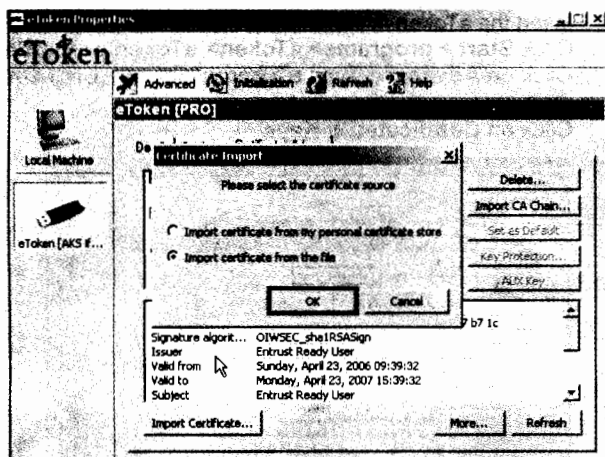
Click on **Certificates & Keys**



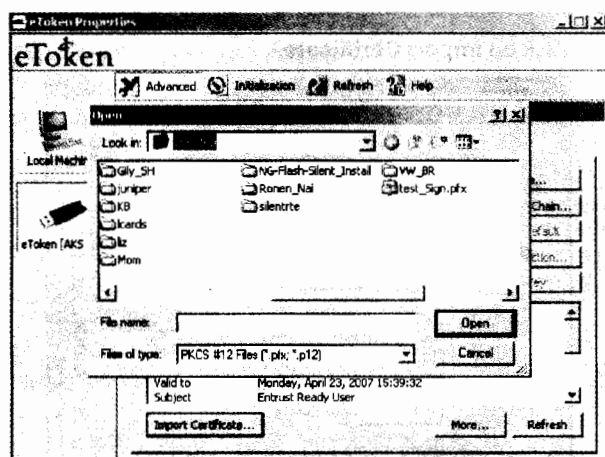
- 2 Click on **Import Certificate**



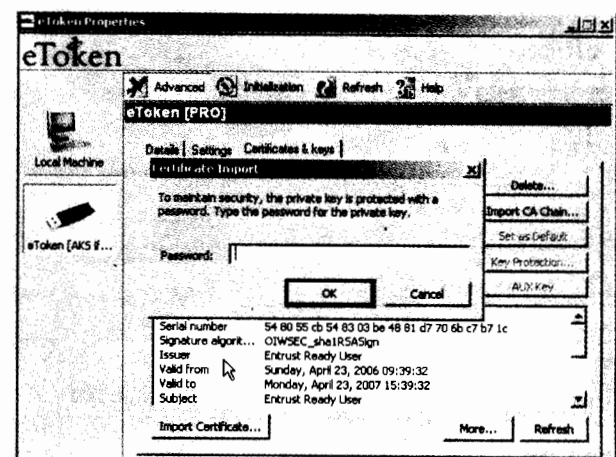
- 3 Select **Import certificate from the file** and click **OK**.



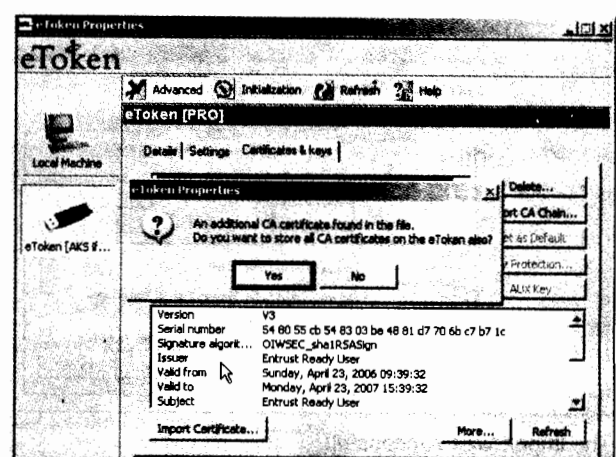
- 4 Select your **certificate file** and click **open**.



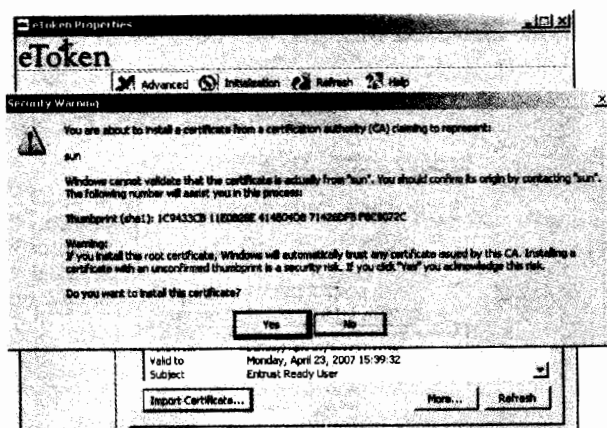
- 5 Type the password. Click **OK**



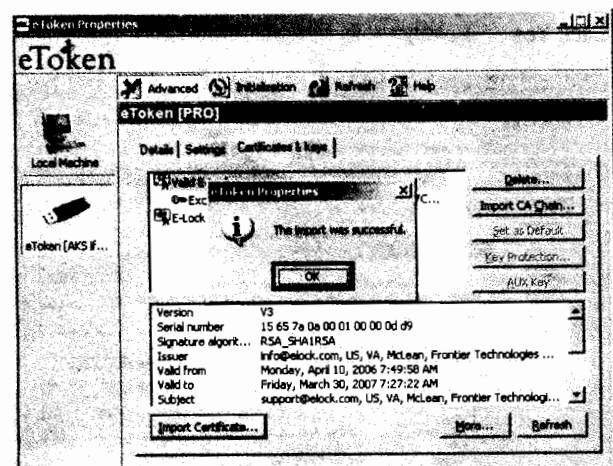
- 6 Click **Yes**



7 A Security Warning will appear, click Yes



8 Click OK



The import was successful.

END OF PROCESS

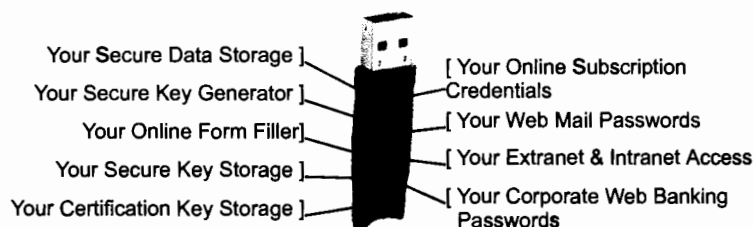
Web Sign On with BooSearch ToolBar



Securely store and manage all web login credentials with a single eToken password. eToken WSO enables easy, convenient and secure storage of all of your users' web logon and access credentials directly from a web page.

It stores all necessary logon information including passwords, PIN numbers, account numbers, credit card details, telephone numbers, URLs, expiration dates and account notes.







eToken WSO gives users instant access to all their Internet web accounts by recognizing the saved page and automatically filling it out upon presentation of their simple eToken password.



Features of Web Sign On

- 100 % Spyware Free
- No Backdoors
- 100 % Malware Free
- No Tracking Codes
- 100 % Adware Free
- No Zombie Codes

Benefits of Web Sign On

-  Enables users to access multiple web accounts using a single eToken
-  Requires no changes to the web application
-  Manages multiple login IDs and passwords
-  Allows users to take their passwords with them wherever they go
-  Protects the user's sensitive data and personal information
-  Enables a variety of other security services

Web Sign On can be downloaded from our website, using the following address :

http://www.boosearch.com/BooSearch_Tool_bar_with_eToken_Web_Sign_on.aspx

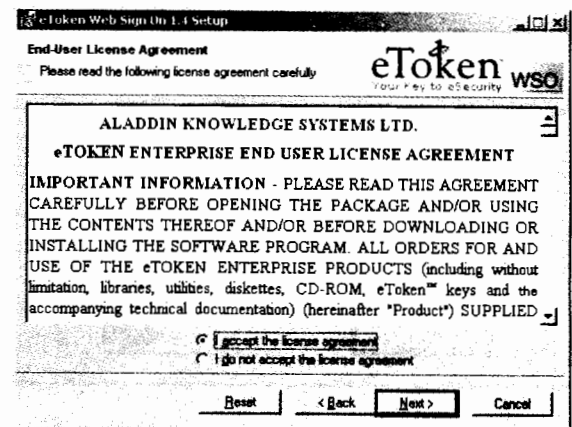
or <http://www.6URL.com/0YE4>

How to install Web Sign On?

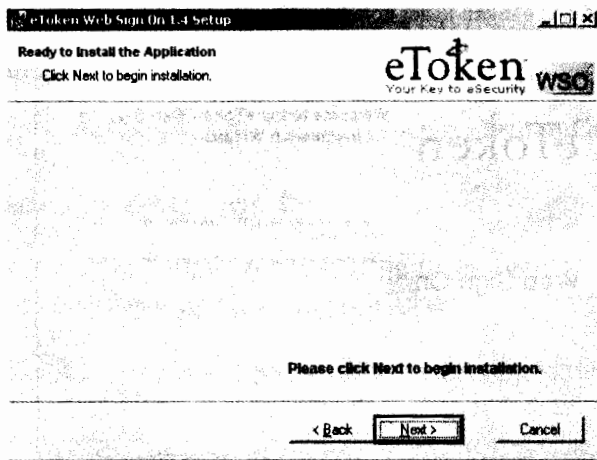
- 1 Open eToken folder from the CD & double click on WSO_1_4 Click Next



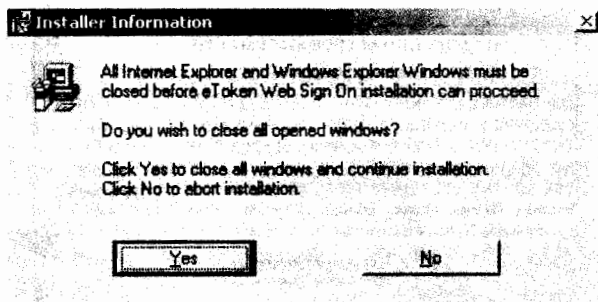
- 2 Select I accept the license agreement and click Next



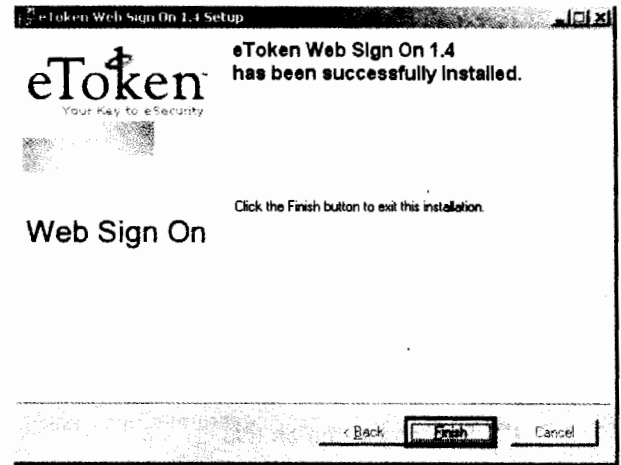
3 Click Next



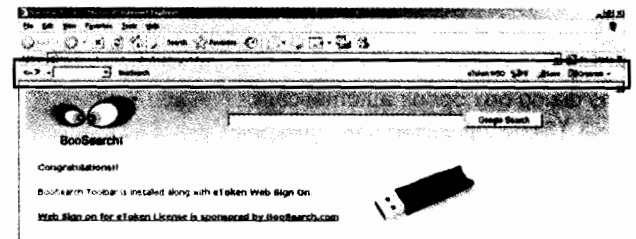
4 Installer Information will appear. Click Yes



5 Click Finish



6 An internet explorer will open with installed WSO in toolbar



END OF PROCESS

Saving your personal credentials on your eToken

- 1 Insert your eToken into the USB port.
- 2 Browse to a password protected website.
Enter your username and password for the web site.

Click the relevant **submit/login** button.

Username:


Password:

☐ Remember me on this computer.

[I cannot access my account](#)

- 3 The dialog box opens automatically.
Click **Yes**

eToken WSO - Automatic Save [X]

 Would you like to save the login form on this web page on your eToken?

☐ Don't ask me to save a form again

- 4 The eToken WSO – Save Profile dialog box opens. The profile Name and full URL are displayed. Click **OK** to save the profile (or Advanced to view advanced settings and then **OK**)

eToken WSO - Save Profile [X]

eToken WSO will save this new profile to your profiles list.


Name:

URL:

☐ Don't show this window again

- 5 The eToken WSO – Login to eToken dialog box opens.
Enter your personal eToken password and click **OK**

eToken WSO - Login to eToken [X]

 Enter eToken password to save profile

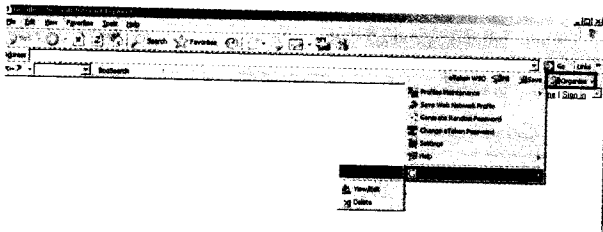
eToken:

eToken password:

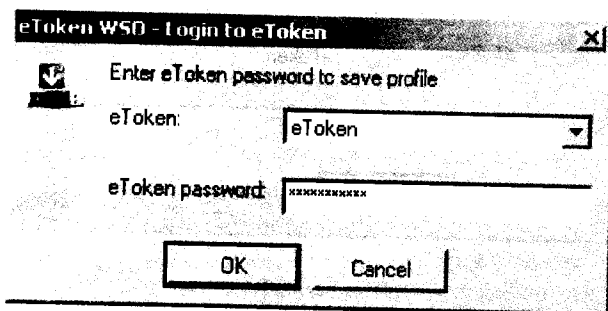
NOTE: You can store many profiles for different websites on one eToken. You can also store several different profiles for the same website but for different accounts on the same eToken.

Using WSO to log on to a password protected website

- 1 Insert your eToken into the USB port.
- 2 Click **Organize**. Select your web address or type web address directly into address bar of browser



- 3 The eToken WSO – Login to eToken dialog box opens. Enter your personal eToken password and click **OK**



- 4 Your personal credentials are automatically filled in the login screen.

..... END OF PROCESS

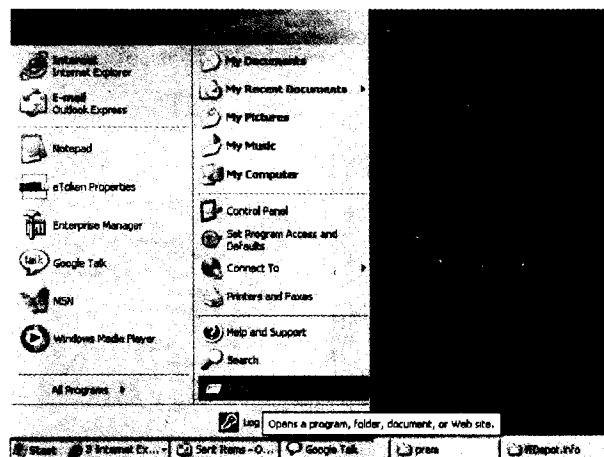
How do I initialize the eToken using RTE

The eToken Initialization feature restores an eToken PRO/NG-OTP or Smartcard to its initial state. It also enables the initialization of multiple eTokens and sets the initial eToken configuration, including:

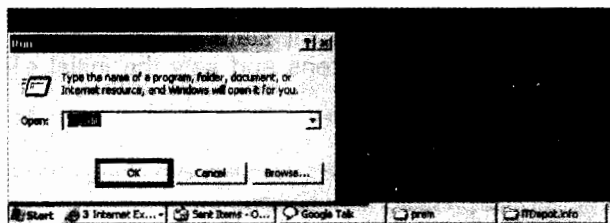
- User password
- Administrator password (optional).
- Retry counters (for user and administrator passwords)
- Initialization key
- FIPS or non-FIPS mode

NOTE: The eToken Initialization feature is designed for use with the eToken PRO, eToken NG-OTP and smartcards.

- 1 Click **Start**. Select **Run**

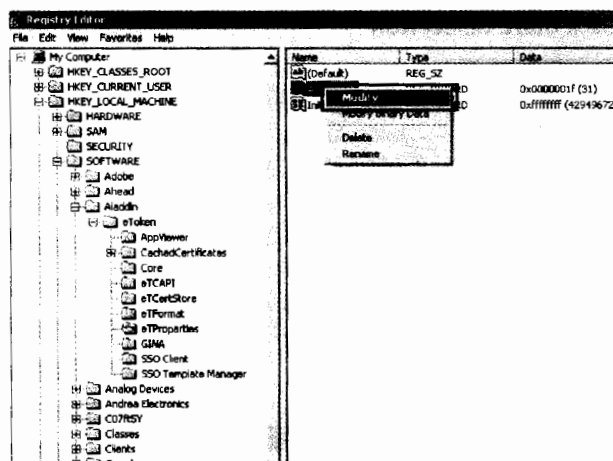


- 2 Type **regedit** into open box and click **OK**

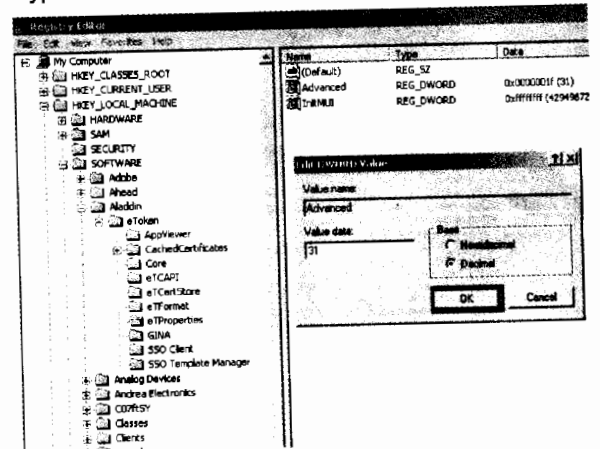


- 3 Navigate to and select the following key:
HKEY_LOCAL_MACHINE\SOFTWARE\Aladdin\eToken
eTProperties

In the right pane, **Right click** on **Advanced** and select **Modify**.

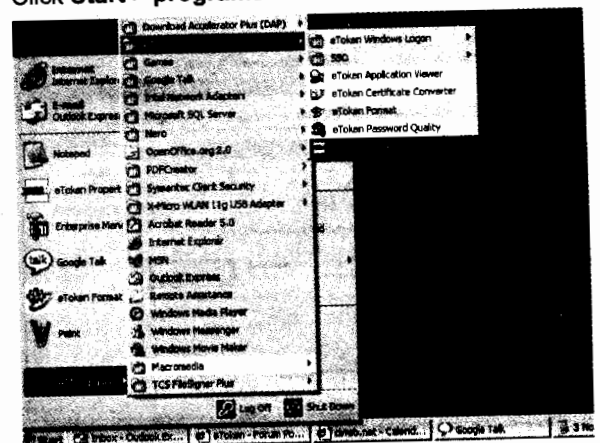


- 4 Select **Decimal** from **Edit DWORD value** dialog box and type **31** into the field & click **OK**

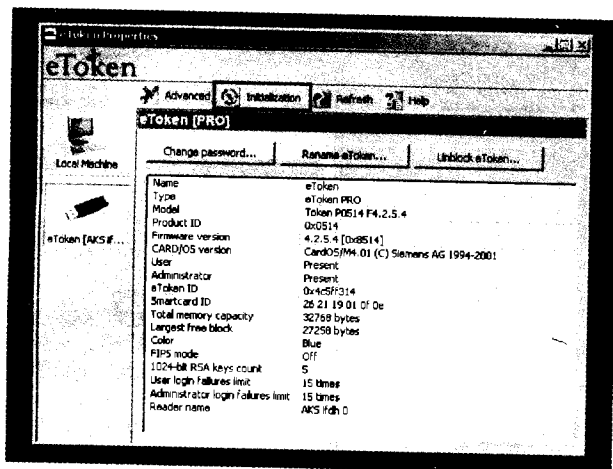


- 5 Close the **Registry Editor**

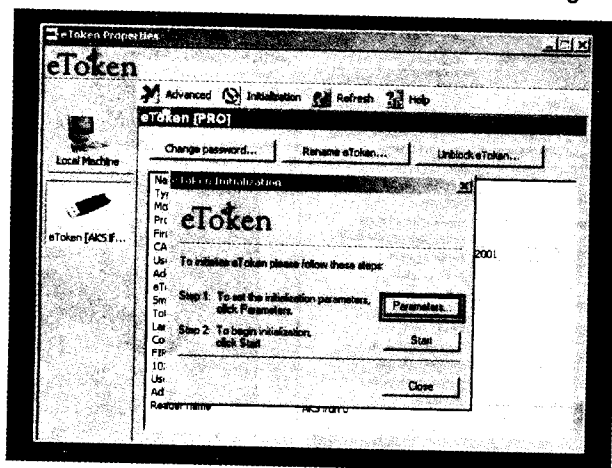
- 6 Insert the **eToken** in the USB port of the computer.
Click **Start > programs > eToken > eToken properties**



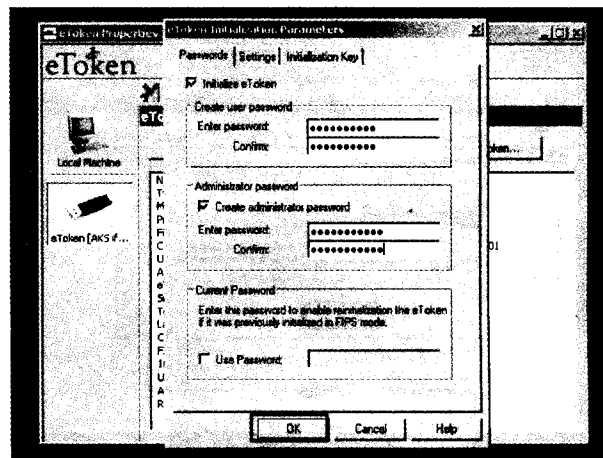
- 7 Click on **Initialization** tab .



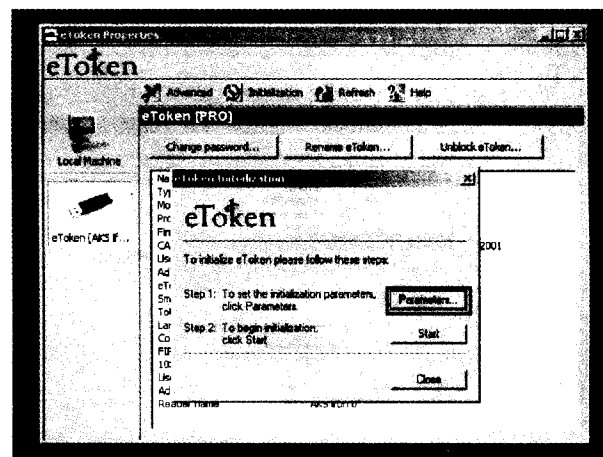
- 8 Click on **Parameters** from eToken Initialization dialog box.



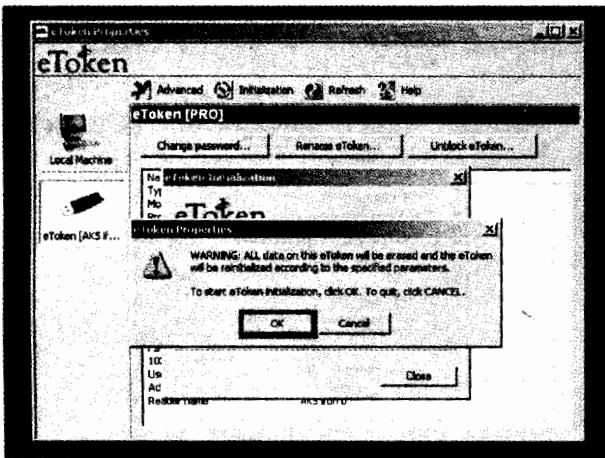
- 9 Type **user password** and **administrator password** and click **OK**



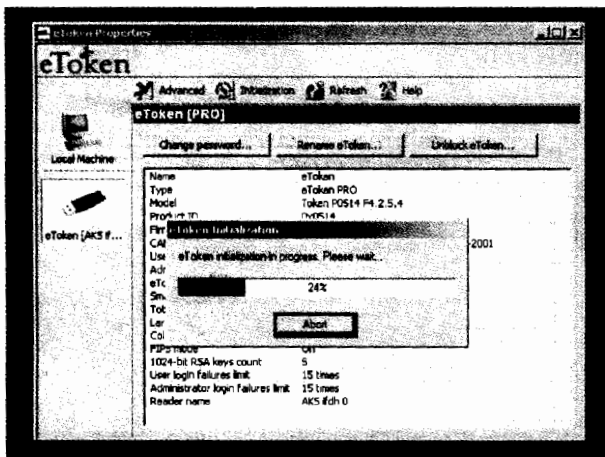
- 10 Click **Initialization** tab again & click **Start** button.



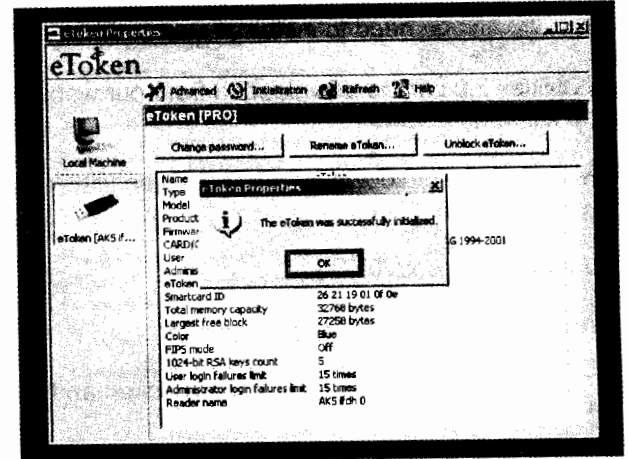
- 11 A warning will appear, click OK



- 12 Initialization progress will start.



- 13 Click OK



- 14 The eToken was successfully initialized.

..... END OF PROCESS

How to format eToken?

To format eToken you need to install **eToken utilities 2.0**.

eToken Utilities 2.0 can be downloaded from our website, using the following address :

<http://www.isecurity.info/downloadSoft/downloadfiles/utilities.msi>

or <http://www.6URL.com/0YC3>

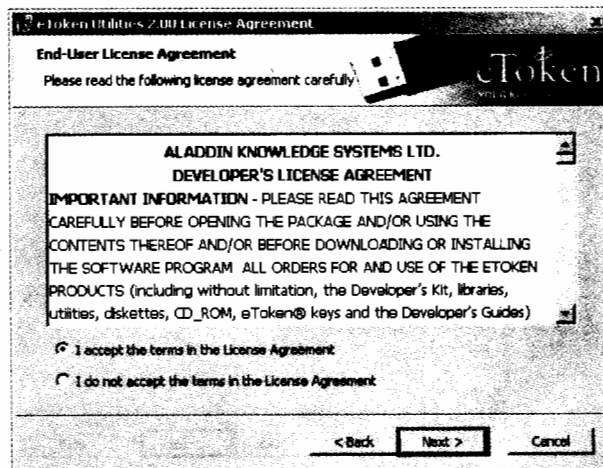
or alternatively you can order for the CD.

NOTE: The format can be done with 32K eToken and not with 64K eToken

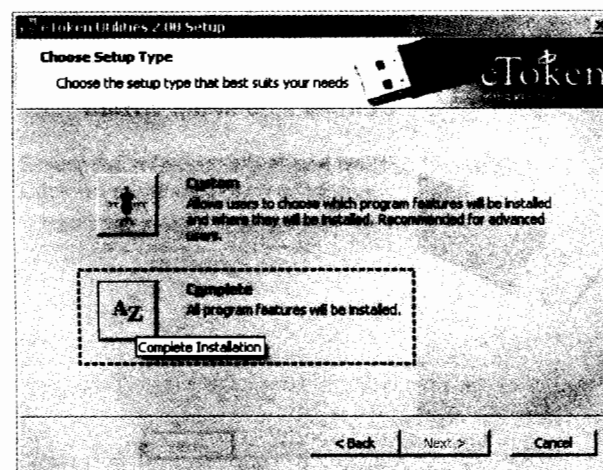
- 1 Open eToken folder from the CD & double click on Utilities. Click **Next**



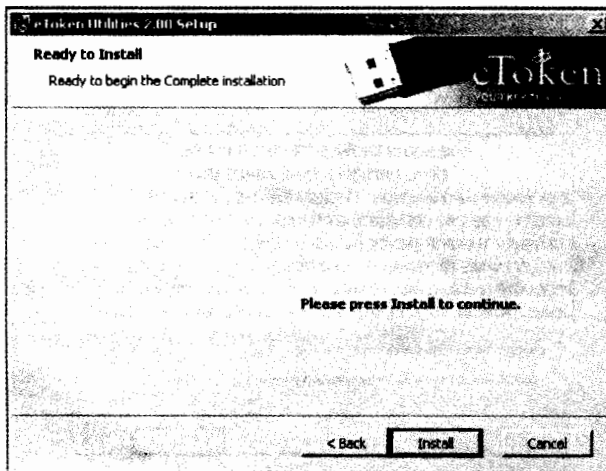
- 2 Select "I accept the license agreement & click **Next**



- 3 Choose **Complete**



4 Click **Next**

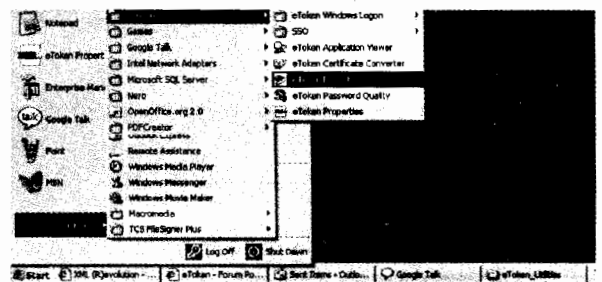


5 eToken utilities has been successfully installed.

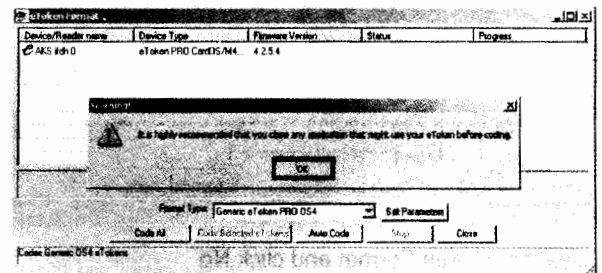


Insert the eToken in the USB port of the computer.

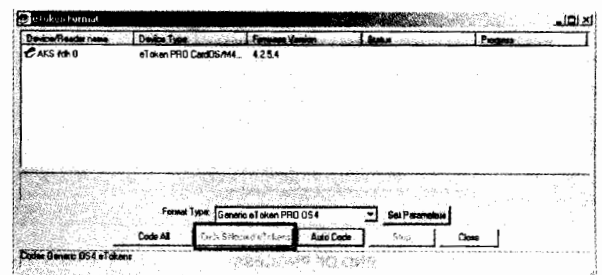
6 Click **Start > programs > eToken > eToken properties**
Click on **Certificates & Keys**



7 A warning will appear, click **OK**

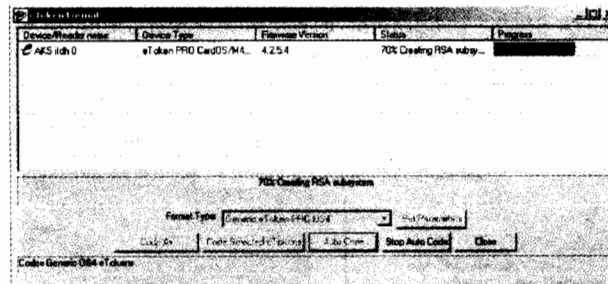


8 Select the eToken which you want to format and
Click on **code selected eTokens**.

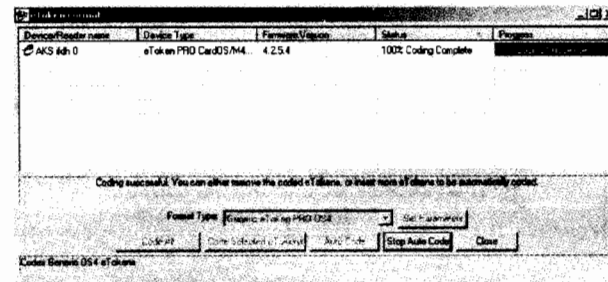


■ How to format eToken?

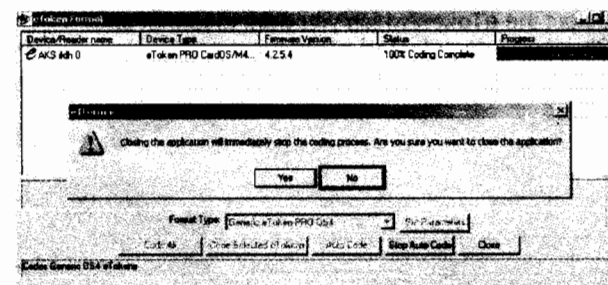
- 9 The format process will take place.



- 10 eToken Format is successfully complete.



- 11 Close the eToken Format and click No



..... END OF PROCESS